



NZ'S LARGEST PLASTICS FABRICATOR OF
ABOVE AND BELOW GROUND TANKS AND SYSTEMS



Why APD

APD is the largest plastics fabrication company in New Zealand and has been in the business of designing and building above and below ground tanks, pipelines and bespoke products for over 15 years.

Leadership

APD Ltd is a leader in plastic design, fabrication & welding of products for the NZ and Australian markets. We were the first company in NZ with an approved Code of Practice to fabricate Chemical Storage Tanks to HSNO Standards.

Expertise

APD is a NZ owned company that provides solutions in plastics and strives for high quality and customer service within the industry. All of our fabricators either hold certificates in hot air welding and extrusion welding, or are currently completing their certificates.

Yearly welding testing is conducted to confirm their competence.

Quality

APD prides itself on using the latest technology in welding equipment, allowing us to weld our products in accordance with the DVS series of standards for plastic fabrication and our above ground tanks are all designed in accordance with the standards EN1778 and BS EN12573.

Our sheet butt welder is the largest in New Zealand and we are able to weld sheets up to 50mm thick and 4m, long allowing us to build tanks up to 60,000L with ease.

We understand that off-the-shelf products do not suit all business needs. Our extensive product range is complemented by our engineering and design expertise, meaning we offer commercial and domestic solutions for any type, or size of storage problem.

Some of our product range includes:

- Chemical Storage Tanks
- Boat and RV Tanks
- Underground Water Retention/Detention Systems
- HVAC Ducting suitable for chemical applications and council swimming pool environments
- Rain Harvesting Systems
- Piping Systems for chemical, water and waste water plants
- Open Top Process Tanks

Please refer to our website www.apd.co.nz where you can view our latest products



Stewart Mearns

Stewart's focus is out of the office meeting new customers, providing presentations on our products and services and building on our existing relationships. Stewart also provides quotes for chemical tanks, process tanks, pipelines, HVAC ducting and our range of bespoke products.

Ph: 09 263 7741
Mobile: 0275 332 436
Email: stewart@apd.co.nz



Andrew Bosman

Manages customer enquiries and provides quotes for chemical tanks, process tanks, pipelines, HVAC ducting and a range of bespoke products. Andrew also undertakes site visits to help offer solutions to customers to meet their needs.

Ph: 09 280 3798
Mobile: 021 506 574
Email: andrew@apd.co.nz



13-15 Joval Place Wiri, Auckland 2104
PO Box 12 663, Penrose 1642, Auckland, New Zealand

Contents

HazSure Standalone and Self Bunded Tanks	2 - 3
HazSure Tank Specifications Safety and Mixing Accessories	4 - 5
Trade Waste Tanks	6 - 7
IBC Bunds	8 - 9
Process Tanks	10 - 11
Pipelines & Ducting	12

Standalone & Self Bunded Tanks

Cutting edge plastic fabrication from APD Ltd.

500L to 60,000L capacity

Safely store hazardous substances on site in plain tanks up to 60,000L and in self bunded tanks up to 20,000L.

Long lasting and HNSO compliant

HazSure® chemical tanks are designed to have a 25 year life, are EPA approved and HSNO test-certifiable for almost all class 5, 6, 8 and 9 chemicals.

Intelligent, Sophisticated Design

Our designs allow quick, straight forward installation of the tank, reducing cost and the need for multiple contractors.

What's more, the tank may be easily moved to cater for future needs!

Looking for the full package?

HazSure® self-bunded chemical tanks provide approx. 50% space saving compared to traditional tanks and bunds.

HazSure® self-bunded chemical tanks provide a weather-proof bund and tank in one package to eliminate the need for daily checks and ensuring water and chemicals do not mix.



Fixtures and Fittings

We also produce a range of accessories and equipment to help you get the most from your tank. Check out Page 5 for more accessories.

When space isn't the issue and you need flexibility: The Plain Tank and APD Bund Solution

When you choose a plain tank (pictured) we can create a separate bund to be installed with it. You achieve the benefits of a self-bunded tank without sacrificing outlet and drain locations, or high volume size choices. All of this with the convenience of getting everything from one source.

We can also include a rain cover with APD bunds.

WHICH IS THE RIGHT TANK FOR ME?

You require outlets or drains at the bottom or side of the tank

You're looking for all-in-one weatherproof solution

You already have everything else or your concrete bund is already installed

You want to make the most of the space available

You are wanting the largest tank available

You want an environmentally friendly solution

You need a standalone tank

You need a self-bunded tank

Designed to suit you

Because we design and build to order you can get the tank to meet your requirements. We may vary the tank dimensions to fit seamlessly into your work environment.

Speak to one of our team today for help designing the best tank solution to suit you. Call us on 09 263 7741.

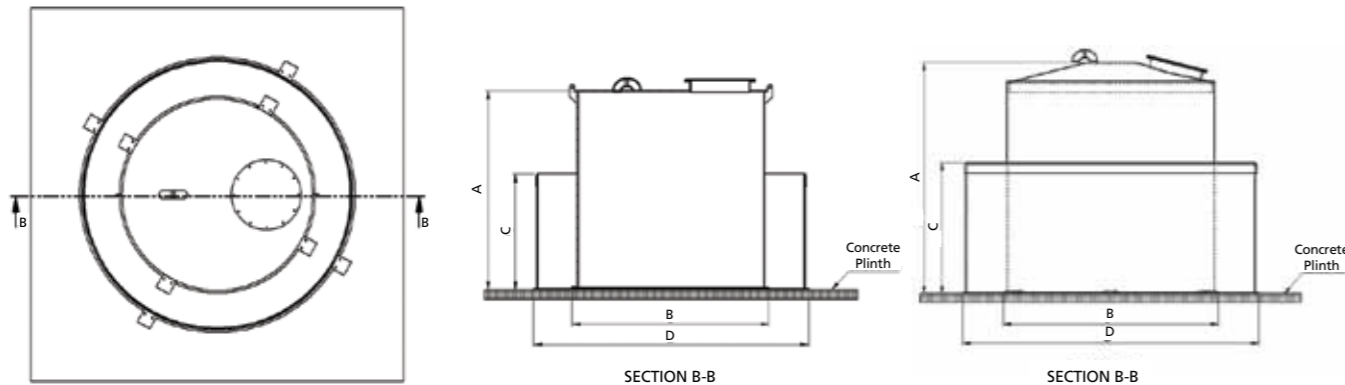
Flat Roof Plain Tank & Bund Dimensions

Working Volume (L)	500	1 000	1 500	2 000	2 500	3 000	5 000
Tank Height Overall (mm) A	1 018	1 263	1 393	1 538	1 534	1 703	2 008
Tank Base Diameter (mm) B	959	1 192	1 352	1 462	1 627	1 690	1 988
Bund Height Overall (mm) C	576	821	851	901	891	1 008	1 198
Bund Base Diameter (mm) D	1 421	1 650	1 910	2 110	2 285	2 402	2 824

Conical Roof Plain Tank & Bund Dimensions

Working Volume (L)	5 000	10 000	20 000	30 000	40 000	50 000	60 000
Tank Height Overall (mm) A	2 077	2 651	3 268	3 750	4 209	4 347	5 000
Tank Base Diameter (mm) B	1 988	2 500	3 175	3 630	4 010	4 400	4 520
Bund Height Overall (mm) C	1 128	1 512	1 760	-	-	-	-
Bund Base Diameter (mm) D	2 804	3 470	4 485	-	-	-	-

* Height and diameter may be varied to meet your space requirements.



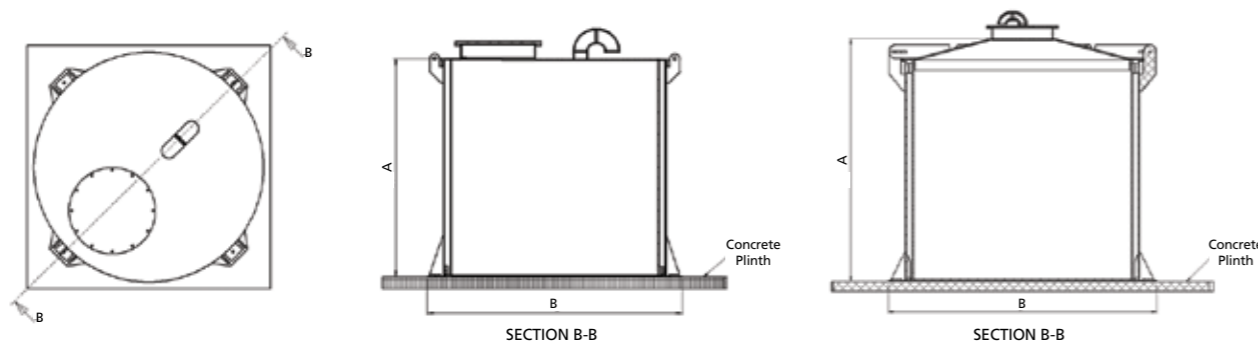
Flat Roof Self-Bunded Tank Dimensions

Working Volume (L)	500	1 000	1 500	2 000	3 000	5 000
Height Overall (mm) A	1 059	1 227	1 353	1 504	1 675	1 962
Base Diameter (mm) B	977	1 216	1 393	1 506	1 752	2 079

Conical Roof Self-Bunded Tank Dimensions

Working Volume (L)	5 000	7 500	10 000	12 500	15 000	20 000
Height Overall (mm) A	1 962	2 238	2 489	2 845	3 025	3 288
Base Diameter (mm) B	2 079	2 386	2 629	2 800	3 026	3 333

* Height and diameter may be varied to meet your space requirements.



Safety & Mixing Accessories

NOZZLES, VALVE ENDS & VALVES

Want to connect your pipework directly to your tank?

It's your choice, as we offer stub flanges and backing rings or valves and valve ends and depending on your needs, we may install a variety of sizes, because we build to order and you choose where on the tank you want them installed.



LADDERS, CAGES AND HANDRAILS

For safe access to your tanks we supply handrails, ladder and cages designed specifically to suit our tanks. Fabricated in steel and powder coated in a chemical resistant polyurethane for maximum protection all our handrails, ladders and cages are designed in accordance with AS1657.



MIXER BRIDGES

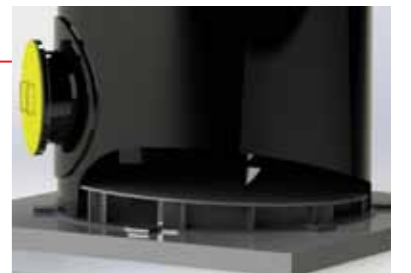
For applications where mixing is required, we can provide mixers and mixer bridges designed specifically to suit your mixing needs and work optimally with our tanks. You get the benefit of a complete solution, ready to go, that will work. All of our tanks may be fitted with mixing baffles to improve mixing, based on the impeller design and mixer location in the tank.



SLOPING BASES

Need to empty your tank completely?

Our sloping base design, directs the flow of fluids to an outlet point at the lowest point of the tank to provide efficient and complete draining. There are two options available, a conical base design, or a single sloping design. We will work with you to determine the most suitable option based on the tank size and your requirements.



INSULATION

Ideal for tanks storing Sodium Hydroxide, or any chemicals that need to maintain temperature to avoid freezing. By insulating your tank, you minimise heat loss and save on the costs of heating.

Our insulation is built into the tank, meaning it looks the same as our plain tank and you benefit from that same durable exterior.



PRETTY MUCH ANYTHING ELSE YOU MAY THINK OF!

Whether you require ease of access, or controlling temperatures, level measurement or improving health & safety, we are able to provide side entry manways to insulation and tank heaters, custom flanges and more. Whatever your requirement, talk to us about including it in your project.

Underground Trade Waste Tanks

Our underground storage tanks are a simple and cost effective solution for the collection & storage of trade waste.

Straightforward Maintenance for less downtime and risk

The manway access riser is 600mm in diameter and is positioned directly over the silt trap for ease of maintenance. Internal adjustable extension risers, or external extension risers are also available, if required.

Make the most of your outdoor space

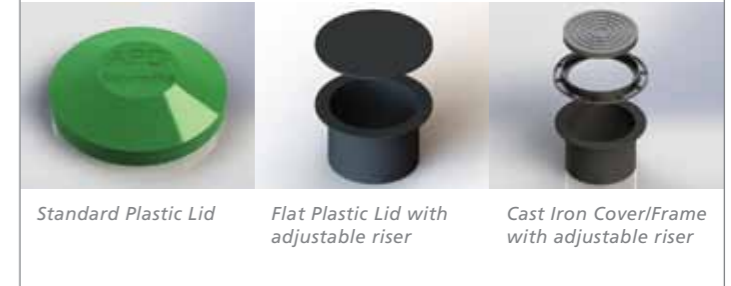
Save precious space on your site and eliminate the intrusive sight of above ground tanks. StormLite® Tanks are buried out of sight and may be installed under traffic areas or lawns.

Practical Underground Storage

StormLite® Underground Tanks are a simple, adaptable and cost effective solution for your trade waste collection needs.

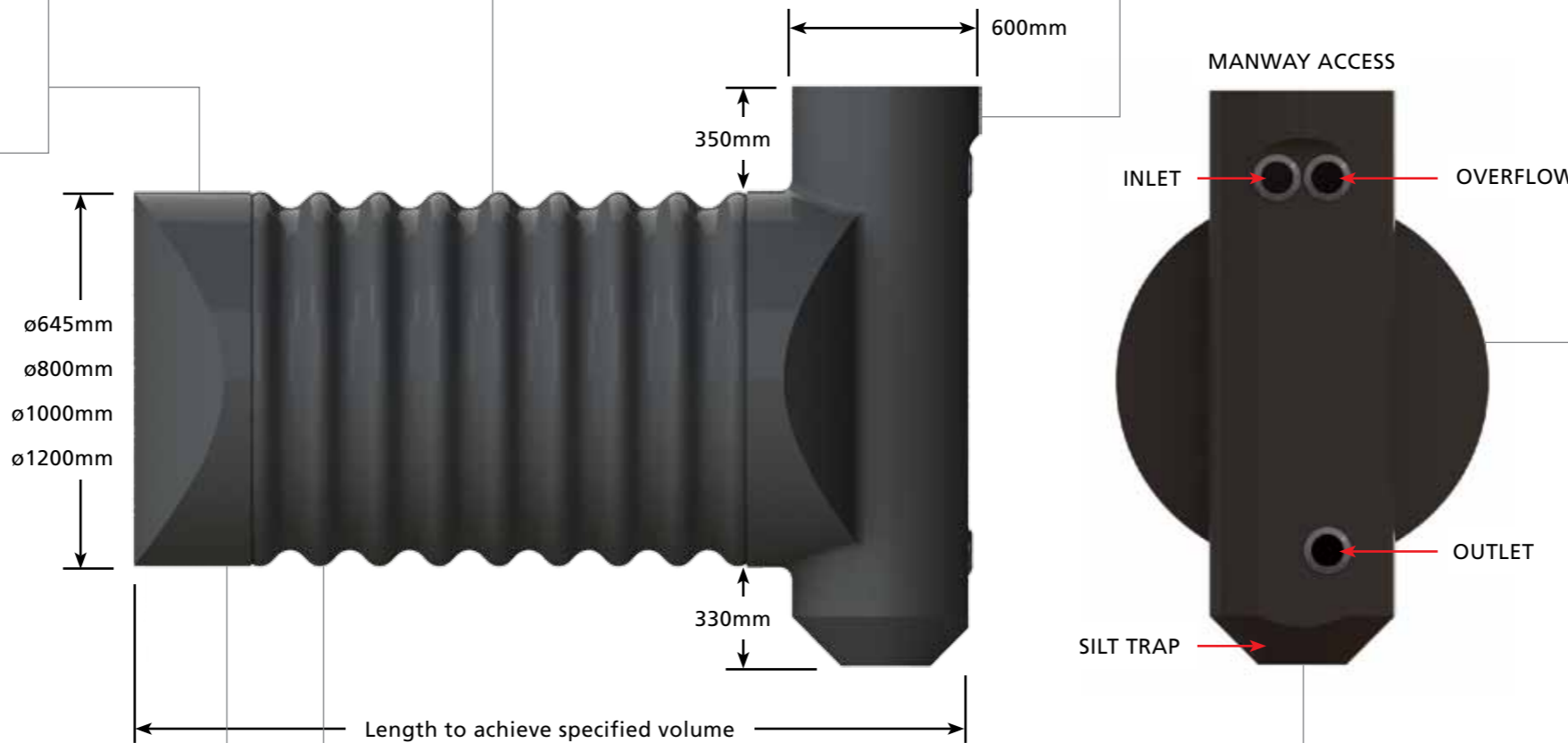
Lids & covers

Plastic lids suitable for lawn or garden locations are available. Cast iron manway access covers and frames for traffic areas, are also available from APD or drainage merchants.



Economic, Ecologically friendly & Efficient Design

StormLite® Tanks have a 25 year design life and come with a 10 year guarantee*. Made with high quality polyethylene that resists degradation to most chemicals, each tank comes with a flanged water tight lid, to prevent contamination by unwanted water ingress.



Get what you need, don't pay for more

When it comes to underground tanks, one size does not fit all. StormLite® tanks are all made to individual size requirements, while meeting council requirements.

The tank is supplied with fittings for inlets, outlets, level measurement and inspection to meet your needs.

Any size, volume and quantity

Because we make these tanks to order you get the size you need to fit into your site and we are able to vary the tank diameter and length to get the perfect fit.

For large capacity sites, or when using multiple processes, we can provide multiple tanks to suit your needs.

Potable Water Tanks

Save precious water by rain harvesting and storing water until needed. Potable Water Tanks have a flanged water and dirt tight lid, to prevent unwanted ingress of contamination, while still allowing easy access for inspection and maintenance.

Installation that saves time and effort

Installation is a breeze with StormLite® Tanks because they are lightweight and robust and are supplied complete in one piece, with a built-in manway access riser and silt trap, ready to install.

Long Lasting Quality

All of our tanks are made from virgin polyethylene, including chemically resistant grade where necessary which, unlike other materials, will not rot, rust, crack or corrode and may be recycled.

*10 year guarantee subject to APD Terms and Conditions of Trade.

Single & Double IBC Bunds

Ensure spill control and containment of hazardous chemical leaks with our IBC bunds, designed to meet all New Zealand HNSO requirements.

Get the right solution for you

Choose from our single or double IBC bunds, or if you are needing something specialised, check out our day tank, or custom options.

All of our bunds can be supplied with rain covers.

Our bunds are designed, so the IBC's can be loaded and unloaded with a forklift. In addition, the bunds are portable and may be moved with a forklift, allowing for quick and easy relocation as required.

Strong & Long Lasting

Fabricated from a Polyethylene only design, that is free from any metal in the support structure, while retaining maximum strength, your bund will not rust, leak or crack. You get a maintenance and worry free 25 year design life with all of our bunds and they come with a 10 year guarantee.

Single Bund & Day Tank

Our bund and day tank setup allows for complete configuration to meet your needs. You may have level monitoring and alarms, pump mounts and valving all setup to suit your process. This allows the IBC to be changed out without affecting your processes or the risk of damaging your equipment.

Protect your workplace and your workforce

All of our Bunds meet HSNO requirements for 110% bund capacity and splash angle and are also designed for chemicals with an SG of up to 2.0.

Economical, space saving solutions

All our bunds are built to be compact and ergonomic relative to their surroundings. Double IBC Bunds are particularly useful when storing multiple IBC's of the same, or compatible chemicals.

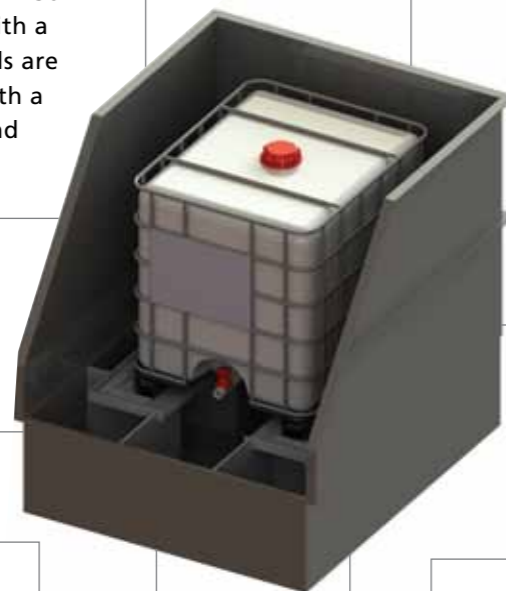
Sophisticated design that keeps you productive

Day-to-day

Easy access to IBC's for less down time and a straight forward process to replace them saving you time and money. We also have options to include taps and valves to increase ease of use.

Longterm

All of our bunds are rust, leak, crack and shock resistant. By using Polyethylene, not metal and applying our design expertise, your IBC Bunds will stay stronger and last longer.



Did you know...

Our IBC Bunds are Seismically rated for New Zealand conditions.



	Single IBC Bund	Single & Day Tank NEW	Double IBC Bund
Capacity	1 209L	1 000L & 50 - 100L reserve to 1 087L	1 381L
Height	1 790 mm	1 590 mm	1 590mm
Width	1 652 mm	2 500 mm	3 152 mm
Depth	1 896 mm	1 896 mm	1 896 mm
Peripherals		Pump, pump mount & any additional accessories	

Looking for something a little different?

Bulk Orders

We can provide for bulk orders and delivery to multiple sites. Speak to us about your medium to large scale project.

Custom Design

Looking for something like our day tank? We build to your specifications, so tell us what you need and let us design something to help you get the leading edge in your business.



Process Tanks

Our PP, PVC and PE open topped rectangular tanks, are preferred by many in the metal finishing industry.

The majority of our Process Tanks consist of a solid Polypropylene or Polyethylene shell reinforced with steel. This construction is suitable for almost all metal finishing Process Tanks. Designed and constructed to the DVS 2205 and BS EN 12573 Engineering Standards, these tanks offer many years of trouble free operation.

Long and Versatile Life

Our tank liners are the best value rigid drop-in PP, PE or PVC. The Liners are butt and extrusion welded to form a rigid liner that fits snugly into the steel tank, protecting it from corrosion. Liners are often used to extend the life of older tanks, which would otherwise need to be replaced.

Safe and Certified

The simplest way to keep your workforce safe is to buy quality products that are going to last and not split, or crack. The materials used for our tanks are resistant to most acids and alkali's, are tough and strong and can be used for temperatures up to 70 degrees. HSNO requires all tanks over 5,000L to have a location test certificate. All of our tanks come with a design documents pack to help get you ready. To find out more about HSNO requirements go to www.business.govt.nz/worksafe

Adaptable Design

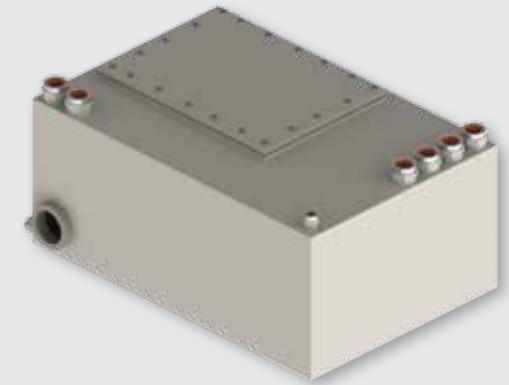
Because we build every tank to order, you get the most from your process tank by only ordering what you need. We build any size of tank and construct it out of the best materials, to suit the work you are planning to use it for. We offer a variety of options including, covering the steel reinforcing to prevent corrosion or adding insulation to prevent heat loss. The best part? We do all of this without the expensive price tag of a customised design.

* Tanks can be built to any height, width, or depth to suit your needs.



Providing essential services

If you are working with Electroplating, Galvanising, Powder Coating or anything similar in the metal working industry, you are going to need a tank to carry out these processes. Our tanks offer a flexible, full service solution to suit your needs.



Custom Design to Suit Your Needs

We have a client who needed to collect trade waste from their open top process tank, so we created the solution to help them do that.

At APD we designed a secondary tank, where waste liquids, at the end of the processes, were dropped into this waste tank for collection, allowing the process tanks to be re-set for the next task.

They ended up with:

- Efficient process – avoiding extensive piping to outdoor waste tanks.
- Safer process – where chemicals and waste didn't have to be transported around the site.
- Space saving process – skilfully organised to suit the site needs.

Efficient and Effective Production

Have everything you need at hand, with our onsite tank solution. As well as the standard process tank setup, we are able to include:

- Heater and cage** — an element to heat liquids and a cage that will protect the tank and liquids from damage, caused by direct heat contact.
- Reinforced tank walls/brackets** — Processing large volumes of products? We are able to reinforce the tanks and include brackets to support the use of Jigs.
- Overflow vents** — control fluid levels and direct output flow to effectively contain excess fluids and therefore reduce the risk of a hazardous chemical spill on site.

Dangerous Chemicals? No Worries...

Regardless of the chemicals you are using, we will recommend the tank materials to suit your application. Whether its PP, PE or PPE or a fibreglass composite, our team of experts will recommend the best solution for you, to ensure your workplace safety and compliance, so you experience the benefits - ie. adaptable design choices and improved workplace efficiency. APD are able to provide cylindrical storage tanks and rectangular open process tanks, to meet your needs.

Planning on working with chemicals that will produce hazardous fumes?

Check our ducting and pipeline solutions on page 13.

Pipelines and Ducting

You have chosen your tank, now its time to think about safely transferring chemicals and hazardous substances, to and from the tank.



Pipelines

Whether from truck to tank, or tank to point of use, or even disposing of waste chemicals, the pipework is an essential part of your process.

CUT COSTS NOT OPTIONS

With a range a polymer materials to choose from we will select the most suitable for compatibility, durability and cost, without the need for costly stainless steel.

TWICE AS SAFE

All of our PVC piping is chemically resistant and safe. If you require an additional layer of safety we are able to also install a dual containment system; this twin wall protects your workspace against hazardous spills.

MAXIMISE QUALITY

Our installation team are fully trained and certified to deliver the highest quality service in a safe and effective manner. All work is pressure tested upon completion.

DON'T WAIT

PVC pipelines are significantly faster to install than stainless steel, so you will be up and running sooner.

HVAC Ducting

Looking for a safe and reliable way to transfer air?

DURABLE

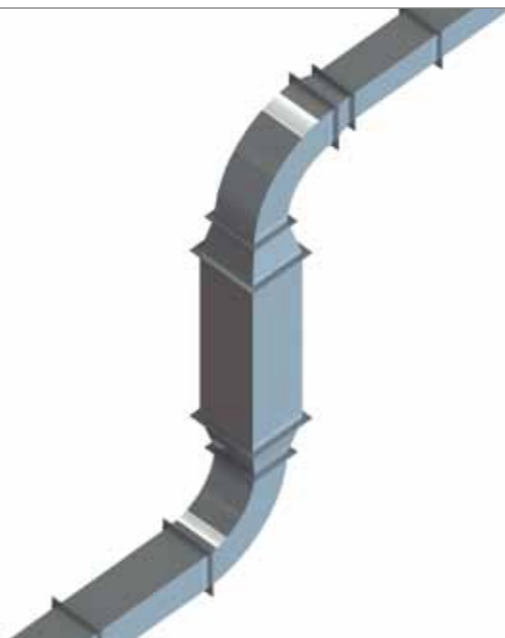
Traditional ducting like steel may rust and corrode when you want to transfer corrosive air. By making our ducting from PP or PVC you could save on long-term replacement costs.

SAFETY COMPLIANCE

Longer lasting means a reduced risk of leaks and spills. All of our ducting is designed to SMACNA ducting standards.

VERSATILE

Get exactly what you need. Round, square, rectangular, on display or hidden, even choose from a range of colour options; we are able to make it all. By building in PP or PVC, we can fabricate solutions for the most complicated design requirements.



"All aspects of the job have been completed to a very high standard, with the result being we now have a very functional plant, that is operating efficiently and compliant to HSNO regulations."

Brian Vercoe Manufacturing Services Manager—30 Seconds Ltd

To read more about this project go to: www.apd.co.nz/projects

APD

www.apd.co.nz