

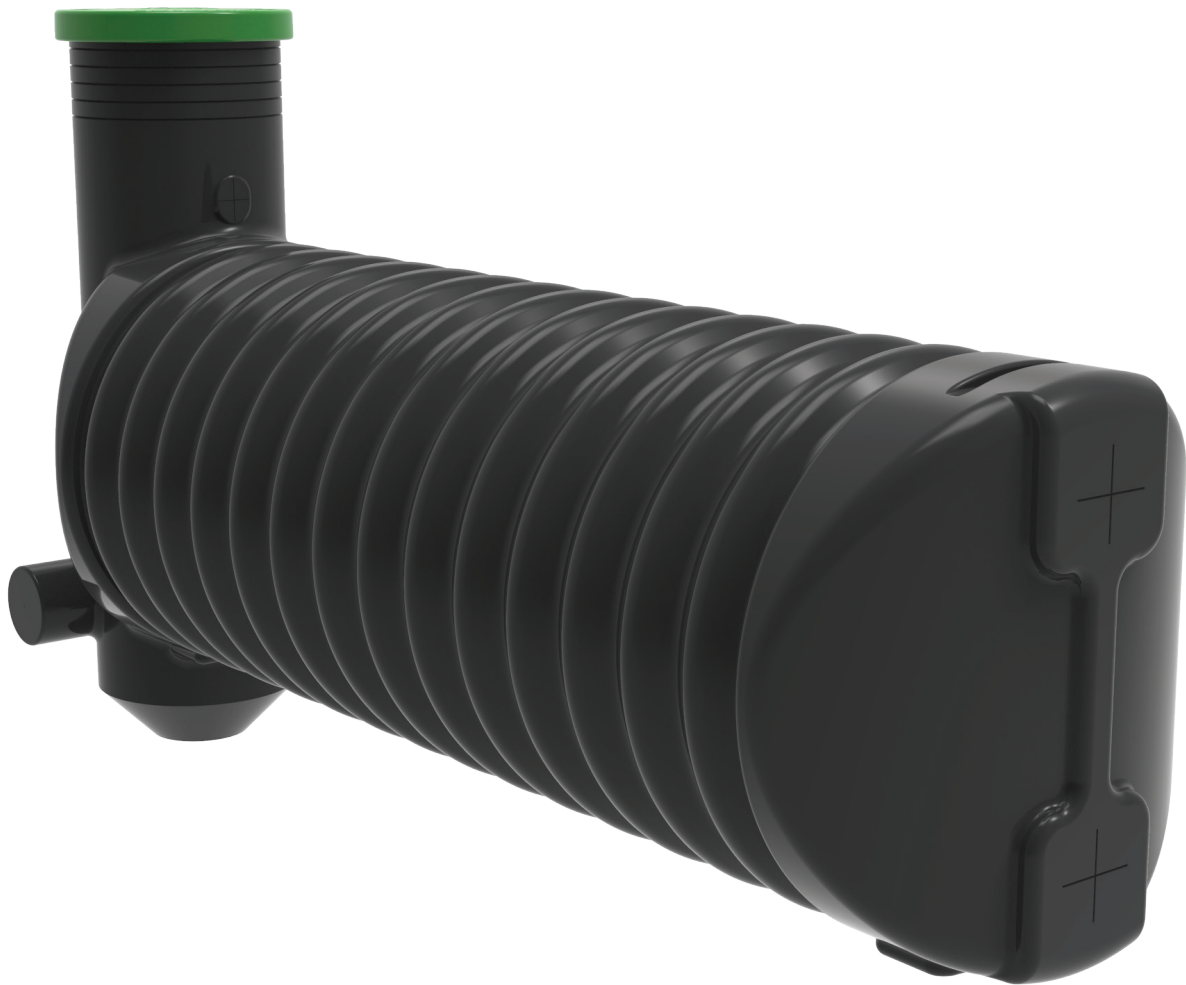


IDEAL TANK & SYSTEM SOLUTIONS



Made to Order Economy.

STORMLITE TANK INFORMATION



Picture shows 1200mm diameter tank and sump



IDEAL TANK & SYSTEM SOLUTIONS

MAXIMUM BURIED COVER DEPTH OVER TOP OF TANKS

- 1200mm Diameter: Maximum buried cover depth is 900mm. Standard riser height: 650mm, can be extended to higher on request.
- 645, 800, 1000mm Diameter: Maximum buried cover depth is 900mm. Standard riser height: 350mm, can be extended to higher on request.
- If you need to bury your tank deeper than above please speak to us about our other options.

AVOID TANKS FLOATING!

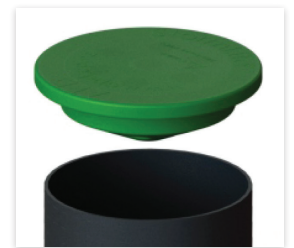
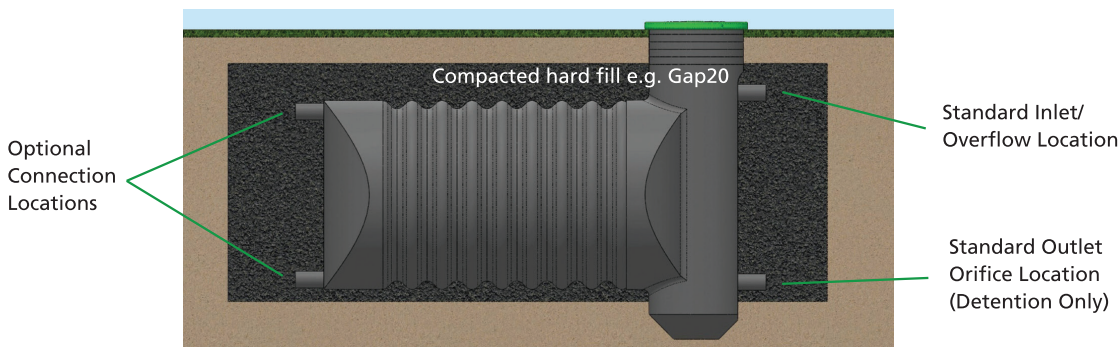
- If possible lay punched drain coil/nova coil in the bottom of excavation to drain water away.
- Backfill and compact around and above tank using e.g. Gap10 or Gap 20 - not clay or soil!
- Fill tank with water during installation.
- Talk to APD about ground anchors if there is a high water table issue at your site.

RESIDENTIAL LAWN INSTALLATION:

Standard Cover: 150mm Compacted Hard Fill + 200mm Soil = 350mm Total

1. For 1200 diameter tanks, the riser can be cut down to suit finished ground level.
2. Ground Anchors: If your site requires less than 350mm cover and/or has a high water table please contact APD.

* Detailed installation drawings are available on request from APD.



IMPORTANT

For safety reasons the tank lid must be securely fastened with the 3 screws provided.

DRIVEWAY INSTALLATION:

Cover Requirements:

- Compacted Hard Fill + Concrete Thickness = 350mm Min Total Cover
 - 200mm Thick Reinforced Concrete Over Tank - Residential Driveway
 - 250mm Thick Reinforced Concrete Over Tank - Commercial Driveway
1. For 1200 diameter tanks, the riser can be cut down to suit finished ground level.
 2. Ground Anchors: If your site requires less than 350mm cover and/or has a high water table please contact APD.

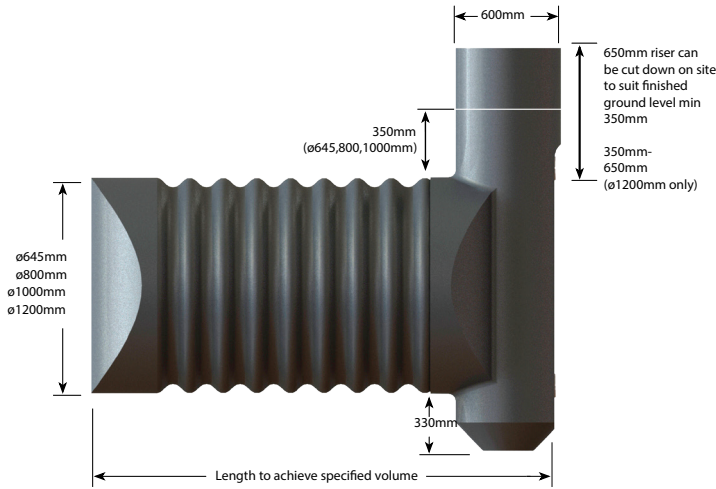
* Detailed installation drawings are available on request from APD.





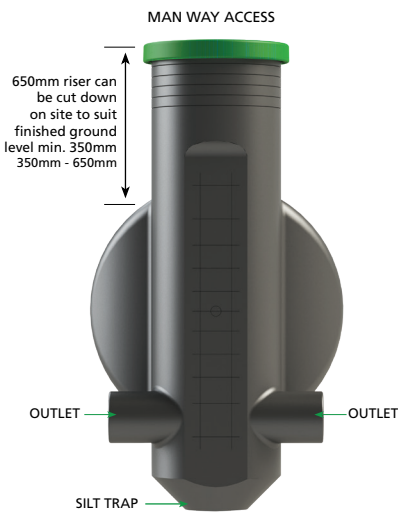
IDEAL TANK & SYSTEM SOLUTIONS

STANDARD STORMLITE TANK DIMENSIONS



STANDARD CONNECTION LOCATIONS BELOW (FOR DETENTION)

- Holes to be drilled on-site by plumber/ drainlayer
- Fittings kit supplied

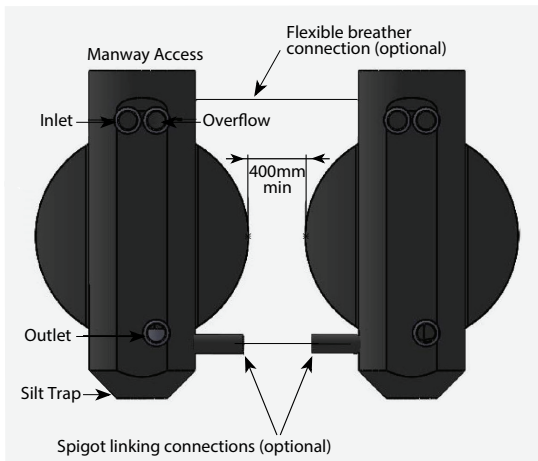


Warning Correct hole saw sizes must be used for the wallace seals provided to avoid leaks.

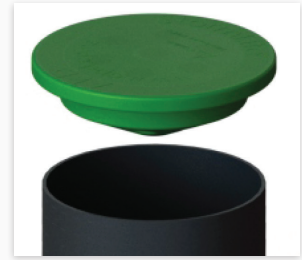


100mm Wallace Seal = 121mm Hole Saw
150mm Wallace Seal = 168mm Hole Saw

JOINING SPIGOT OPTIONS FOR MULTIPLE TANKS



TANK ACCESSORIES



Garden Lid



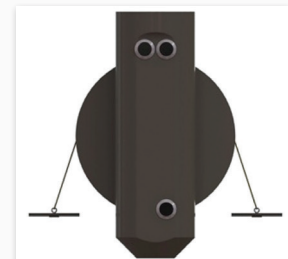
Support ring for driveway or concrete install



Standard 100mm fittings kit (150mm available on request)



Optional pre-welded connecting and joining spigots



Optional Anti-Buoyancy Ground Anchors