

StormSlab®

DETENTION & RETENTION SOLUTIONS

Underfloor Peace of Mind.

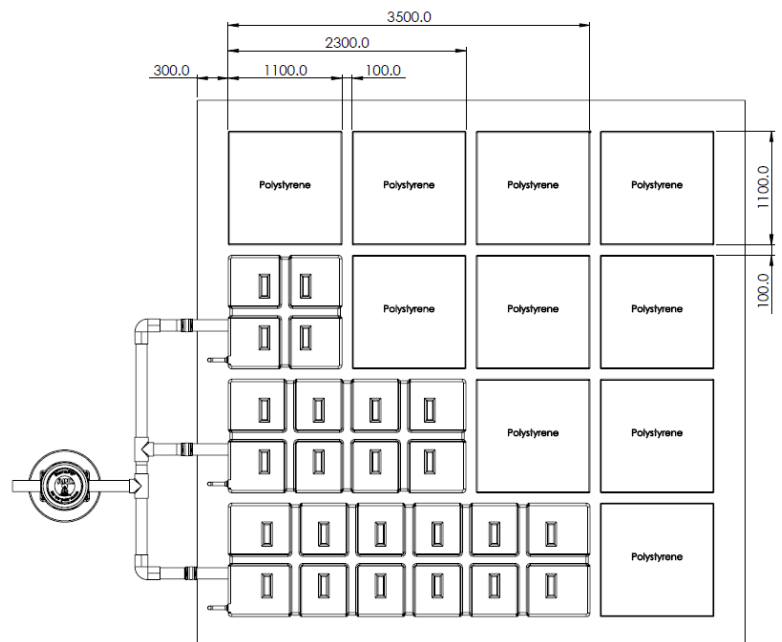
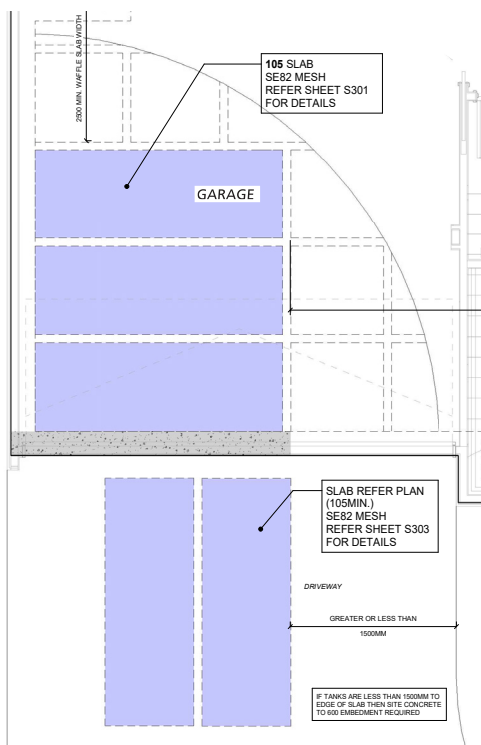
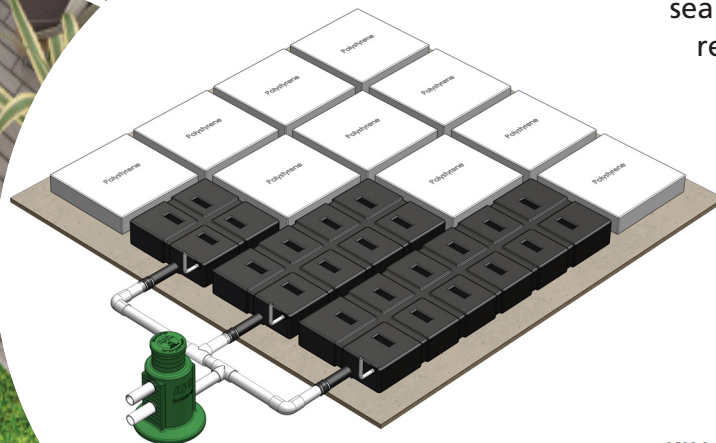
YOUR UNDER DECK, UNDER SLAB & UNDER LAWN STORMWATER MANAGEMENT SOLUTION



StormSlab is an innovative stormwater detention and retention system designed to place storage underneath the building slab. Replacing polystyrene slab formers, our tanks are available in a range of sizes to economically store the required volume with no in-slab connections. StormSlab is ideal for sites where there is a lack of space or minimal fall to public connections.

COMPLETE SOLUTIONS BY APD

The StormSlab system is supplied with a specially designed distribution chamber with sealed lid meeting NZBC requirements and preventing ingress of surface water. StormSlab can be configured with the RainWorx rain harvesting and reuse system for retention applications.



APD

Doing Good From The Ground Up

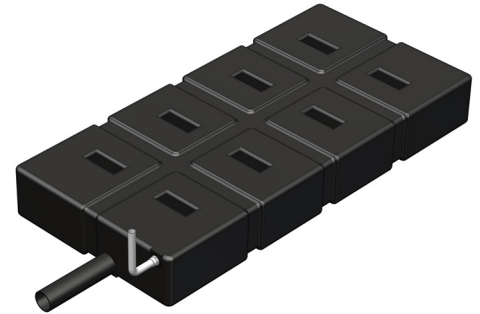
For more information call 0800 263 774

www.apd.co.nz

FEATURES:

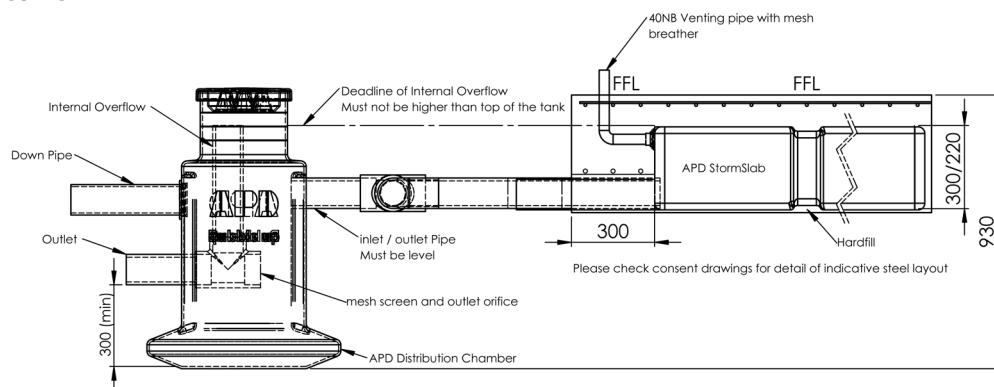
- All tanks are connected outside of the building envelope.
- All our tanks are factory pressure tested meaning minimal site supervision required.
- 1100mm width designed to match polystyrene pod configurations.
- 220mm and 300mm depth options.
- Under deck installation – can be single or double stacked.
- Lengths from 1100mm up to 7m minimise the number of tanks needed.
- Design and specification assistance, including PS1 for engineered residential slab designs and layout drawings.
- Designed and manufactured in New Zealand using water tank grade PE.
- External connections via a manifold offer better access for inspection, cleaning, or modification of the distribution pipework and control structures compared to fully encased systems.

StormSlab	ACTUAL USEABLE VOLUME (litres)	
Length (mm)	220mm DEEP	300mm DEEP
1100	235	325
2300	500	695
3500	765	1065
4700	1030	1435
5900	1295	1805



BENEFITS:

- Reduced Risk: External connections eliminate the risk of leaking or failing under slab connections.
- The specially designed distribution chamber's integrated silt trap ensures tank contamination is kept to a minimum protecting the life of the asset and minimising maintenance.
- The distribution chamber's sealed cast iron lid protects against ground water ingress preventing contamination of the tanks and minimising maintenance.
- Tank volumes quoted are the "useable" volume not the gross volume, ensuring the volume used is the storage volume available to the homeowner.
- The wide tank range allows for simplified slab design providing the designer with greater flexibility.
- Cheaper installation: Any certifying drainlayer/plumber can install the tanks and issue the PS3, meaning the installation timing is able to meet the building program not the installer's program.
- Lower installation cost: No additional onsite inspections as all tanks are tested and passed before leaving our factory providing piece of mind, ensuring the tank is fit for purpose and ready to use when it arrives onsite.
- Simple and quick: For under lawn installation, it is as simple as using the recommended quantity of the well-known and proven APD ground anchors. No aggregate or concrete to hold things down.
- Easy access: The external connections via a manifold offer better access for inspection, cleaning, or modification of the distribution pipework and control structures compared to fully encased systems.



Doing Good From The Ground Up